



### Safety Benefits:

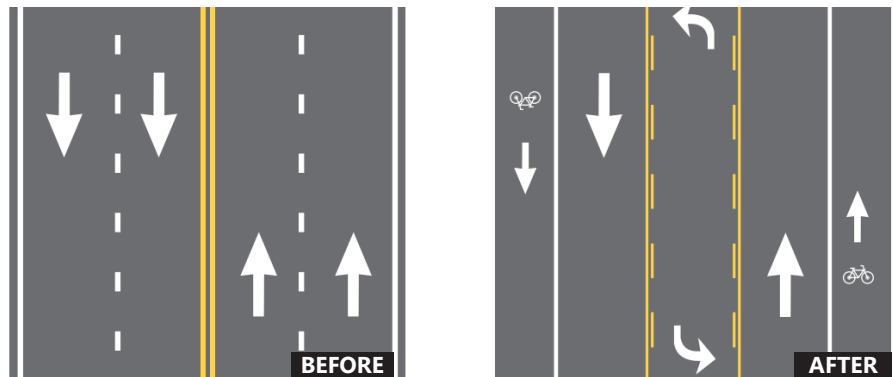
4-Lane to 3-Lane  
Road Diet Conversions

# 19-47%

reduction in total crashes.<sup>1</sup>

## Road Diets (Roadway Reconfiguration)

A Road Diet, or roadway reconfiguration, can improve safety, calm traffic, provide better mobility and access for all road users, and enhance overall quality of life. A Road Diet typically involves converting an existing four-lane undivided roadway to a three-lane roadway consisting of two through lanes and a center two-way left-turn lane (TWLTL).



Before and after example of a Road Diet. Source: FHWA

### Benefits of Road Diet installations may include:

- Reduction of rear-end and left-turn crashes due to the dedicated left-turn lane.
- Reduced right-angle crashes as side street motorists cross three versus four travel lanes.
- Fewer lanes for pedestrians to cross.
- Opportunity to install pedestrian refuge islands, bicycle lanes, on-street parking, or transit stops.
- Traffic calming and more consistent speeds.
- A more community-focused, Complete Streets environment that better accommodates the needs of all road users.



Road Diet project in Honolulu, Hawaii.  
Source: Leidos

For more information on this and other FHWA Proven Safety Countermeasures, please visit <https://highways.dot.gov/safety/proven-safety-countermeasures> and <https://highways.dot.gov/safety/other/road-diets>.

A Road Diet can be a low-cost safety solution when planned in conjunction with a simple pavement overlay, and the reconfiguration can be accomplished at no additional cost. Typically, a Road Diet is implemented on a roadway with a current and future average daily traffic of 25,000 or less.

<sup>1</sup> (CMF ID: 5554.2841) Evaluation of Lane Reduction "Road Diet" Measures on Crashes, FHWA-HRT-10-053, (2010).